



## Pre-Primary and Primary



A World Class School  
Where *every child is special...*

[info@miniplanet.guru](mailto:info@miniplanet.guru), [www.miniplanet.guru](http://www.miniplanet.guru)

When directed by the inner guides, learning has its own intrinsic reward. There is a great joy and satisfaction of "Ah, Ha!", as the child discovers things for herself.

### THE GLOBAL CLASSROOM DIFFERENCE

- Started by educators
- Shaped in real classrooms
- Grounded in research
- Guided by vision
- Based on travel to and first-hand study of education in 38 countries

WELCOME

## Welcome to Mini Planet

Global Classroom provides through Mini Planet a holistic and balanced education. It uses advanced pedagogy that integrates Montessori, Waldorf and Multiple Intelligences. Its curriculum is grounded in research and based on evidence as provided by the world's largest meta-analysis of educational research. It has been guided by vision and shaped in real classrooms. It has been started by educators with 38-country experience of education and family know-how of running the world's largest school.



Mini Planet presents a fresh new opportunity for those who are keen to start a school, or have an existing pre-school that needs upgrading.

**We welcome you to explore Mini Planet for your school and invite you to join hands with GLOBAL'S EDUCATION FOR LIFE.**

## Mini PLANET OPTIONS

There are four options of a school as below:

- Option 1:** Pre-school (Playgroup, Lower KG and Upper KG, with option of Toddlers)
- Option 2:** Playgroup to Class II
- Option 3:** Playgroup to Class V
- Option 4:** As you grow, you also have the option to upgrade your Mini Planet to Nurture International or Nurture Global School (K-12), IB / CBSE / ICSE / CIE.



## Who may start a Mini Planet?

- A corporation that wishes to start a corporate based day care or pre-school.
- An individual who wants to start their own preschool or school and needs both branding and support to help establish their preschool or school.
- Mini Planet Schools (Options 1, 2 & 3 above) may be run as a private concern such as a proprietorship in the name of the owner.
- Non-profit status is not required for a preschool or a primary school. Non-profit society, Section 8 Company, or trust is necessary to run a secondary school (Class IX and above, as in Option 4).



**Children deserve nothing less.**

Nurture Uniqueness

## VISION

To inspire every child for life through a rounded education of a child's body, mind, heart and spirit, to help them grow into complete and balanced human beings, able to recognize their potential as contributing and successful members of their family, society, country and the world.

Just like a little sapling is supported by a gardener to become the best tree of its kind, Mini Planet provides individual support for every child's best academic, social, physical and emotional well-being.

Mini Planet is a school founded upon four building blocks of education and the principle of 'Compete with Yourself'. The role of Education is to bring out the nobility and maximise the potential of every child through

## MISSION

To create an environment in which every child feels nourished, nurtured and supported to become the best s/he can be. To provide learning opportunities in a non-competitive, loving, respectful and caring environment that nurtures a positive self-image of every child and creates in them an intrinsic love of learning.

a carefully planned environment that addresses all aspects of a child's development: body, mind, heart and spirit.

### The Four Building Blocks of Education in the 21st Century are:

- Universal Values** — Spirit 'to be'
- Global Understanding** — Heart 'to love'
- Excellence in All Things** — Mind 'to discover'
- Service to Humanity** — Body and Skills 'to do and to serve'

Four Building Blocks of Education



Mini Planet provides a rounded education of body, mind, heart and spirit of every child.

**Mini Planet is a balanced and rounded education. This means the development of both inner and outer powers in a carefully designed environment.**



## Mini Planet uses advanced pedagogy of the young child

IT INTEGRATES THE WORLD'S BEST EDUCATION SYSTEMS AND THINKERS:

- The Montessori Method of Dr Maria Montessori
- The Waldorf Method of Dr Rudolf Steiner
- Bloom Taxonomy of Dr Benjamin Bloom
- Multiple Intelligences of Dr Howard Gardner
- John Hattie's world's largest meta-analysis of educational research

## Primary Mini Planet Star School (Custom-built)

- High security school
- Fully air-conditioned classrooms (with the Star rated custom-built school or pre-school)
- Open-air classrooms
- Child level washrooms
- Fully equipped Montessori Classrooms
- Multimedia resource centre in primary schools
- Spacious indoor and outdoor play area
- Pronunciation, mathematics, science laboratories, etc.
- Sound studio



Mini Planet adds value to and focuses on nurturing the confidence of every child while propelling each child forward to the next level of learning and being.



## Mini Planet is a Rounded Education of Body, Mind, Heart and Spirit. A Mini Planet School is a place where:

- Every child is treated as special.
- Every child is nurtured for life.
- Every child excels. Excellence is defined as doing one's best relative to self.

### MINI PLANET: A Rounded Education



### Mini Planet

Based on the principle of 'Compete with Yourself!'





### Mini Planet Primary Years Program

- Mini Planet, based on the Global Education Model of Education, is a program of empowerment of the individual child, along with study materials, methods and world class assessments.
- Mini Planet supports all the goals for which an enlightened school stands.
- In Mini Planet pedagogy, education and educational outcomes are defined in human terms and more broadly than in contemporary education.
- A Mini Planet School helps every child achieve higher levels of excellence than is possible through traditional methods of teaching and learning.
- Global Classroom supports schools in all aspects of implementing of this wider agenda at Mini Planet Schools.

### Personalised Learning

- Mini Planet is a graded / tiered system of studies with focus on mastery.
- Mini Planet supports different understanding levels within a classroom: top, bottom and the middle.
- Differentiation at the level of detail makes Mini Planet curriculum the world's most personalised learning programme. It addresses every child's needs as an individual.



Mini Planet adds value to and focuses on nurturing confidence in each child while propelling each one forward to the next level of growth.

## India's most effective curriculum provides

1. Clear instructional goals
  2. High expectation for achievement
  3. Small concept-based instructional tiers
  4. Clear accomplishment standards for each tier
  5. Personalised work plans based on 'Compete with Yourself' assessments
  6. Use of varied methods until understanding is reached
  7. Immediate feedback combined with the right level of support and challenge
  8. Clear and up-to-date records of student progress
  9. Personalised learning
- Confident, competent and caring children
  - Self-regulated and self-controlled, able to take care of themselves
  - Respectful, courteous and mannered
  - Independent thinkers
  - Team players and leaders
  - Creative and curious
  - Of a growth mindset
  - Enjoy taking on new challenges



## There are two options of a building

### a) Construct a custom made building for Mini Planet.

GCPL design incorporates BALA—Building as a Learning Aid, and environmentally sustainable systems.

### b) Utilize an existing building you have.

Large, airy classrooms are ideal along with some outdoor playground space. If you have a smaller space and no playground, especially in a crowded city, please apply and Global Classroom will review how it may be accommodated.

Space requirements vary according to whether you are planning a preschool or a pre+primary school.

## Option 1

### PRESCHOOL (Toddlers, Playgroup, LKG, UKG)

Mini Planet Star Preschool: A custom built preschool (a 10 room design concept given by Global Classroom on 5,000+ sq ft of land including playground. Capacity 400+ students.

Mini Planet Preschool: Playground along with 3-4 large rooms; absolute minimum is 2 large rooms. Capacity 60 to 180 children, or double this number in two shifts.

## Options 2 & 3

### PRIMARY SCHOOL: PLAYGROUP TO CLASS II OR V

Mini Planet Star School: A custom-built primary school on 10,000+ sq ft plot of land including playground (design concept given by Global Classroom). Capacity 800 students.

Mini Planet School: Some 5-8 large rooms along with playground. Capacity 300+ students.

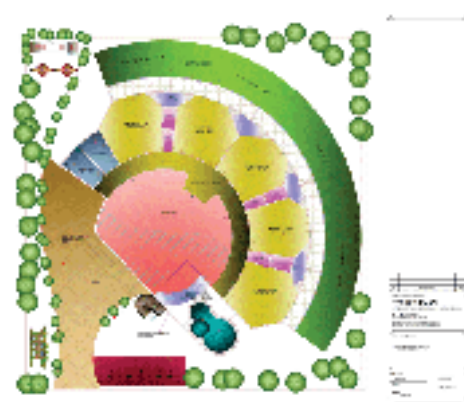
## Option 4

### JUNIOR, SECONDARY OR SENIOR SECONDARY SCHOOL

Upgrade to Nurture International School. Ask for brochure or visit: [www.GlobalClassroom.in](http://www.GlobalClassroom.in).



A primary school franchise of Global Classroom in Hasan, Karnataka.



Architectural Overview of a Preschool (can also be primary 1 & 2) on 5,000 sq ft land (10 classrooms on two floors with 300 to 500 children capacity in one or two shifts.)



## Service and Support

- India's first franchise group that gives you the opportunity to grow from a pre-primary to a primary school and beyond.
- Besides know-how, branding and support for start-up, Mini Planet provides standardization across its different locations through world class assessments, curriculum, teachers training and supervision of quality.

## What does Mini Planet Franchisee Get?

- Business expansion support
- Administration and management training
- Classroom / teacher kit
- Student kit
- Design of atmosphere, colour scheme, etc.

## Academic Support

- Yearly, monthly and weekly timetable
- Thematic lesson plans
- Guidelines for festivals and events
- Guidelines for parents' participation and syllabus
- An outcomes based curriculum, assessment and reporting system based on a mix of pedagogies, supported by research and evidence.
- Guidelines for teaching in all subjects
- Teacher empowerment and motivation
- Improved practice through sharing
- School audits that improve quality, motivate and assist teachers

## Training

- Two days training for management / admin staff, PROs and teachers
- Needs based training twice a year
- Support for quality of implementation and unannounced audits
- On-line and email support 24/7.

## Parent Support

- Parent handbook
- Parent self-analysis and report cards
- Handbooks and planners for every teacher



## A Research and Evidence Based Approach to Educational Transformation



## Mini Planet School is a brand of Global Classroom Private Limited

Global Classroom has its curriculum in over 200 schools across 20 States of India. It is expanding rapidly. The curriculum guarantees the improvement of every child and class and provides data on every child's success.

The school franchise, its curriculum and pedagogy are directed by Dr Sunita Gandhi,

Ph.D., Cambridge University, UK, Co-Founder, Council for Global Education, USA, and Founder, Global Classroom Pvt. Ltd., India.

Global Classroom is built on years of international experience of Dr Sunita Gandhi and know-how of the Gandhi family that runs City Montessori School. Dr Gandhi has traveled

to and studied educational systems in 38 countries and started schools in the Czech Republic, Iceland and India. With a team of over 200 people working on four continents, Dr Gandhi has come up with Global Education Model of Schooling which is based on the principle of 'Compete With Yourself!'

## From a distinguished education background

Beyond getting an initial education in Lucknow, Sunita Gandhi qualified for the toughest scholarship at Cambridge University's Trinity College. She then entered into world's most sought after jobs to work on educational policy at the World Bank in Washington, DC, where she was selected in a worldwide competition to become a Young Professional, leading her into management positions within the institution which she served for nearly 10 years. In 2007, Sunita Gandhi set up the first school in Lucknow, to enable her to implement a much wider agenda of reform in schooling than is possible in schools with already established norms.



**Sunita Gandhi**  
PhD, Cambridge University, UK  
Co-Founder, Council for  
Global Education



Mini Planet JUNIORS

IN JUST 3 YEARS, GLOBAL CLASSROOM  
has expanded into 20+ States of India  
and is growing rapidly. **200+** Schools

**An International Team of Advisors and Trainers include, among others, the following:**



**Prof. Fred Mednick**  
Teachers without Borders  
**USA**



**Prof. Mari Pauliina**  
Helsinki University  
**Finland**



**Shaun Hawthorne**  
John Hattie's Group  
**New Zealand**



**Prof. Manu Kapur**  
Learning Sciences Lab  
**NIE, Singapore**



**Louka Parry**  
Principal  
**Australia**



**Bob-Baratta Lorton**  
Founder, Center for  
Innovation in Education  
**USA**





HEAD OFFICE  
GLOBAL CLASSROOM PVT LTD  
10 G Station Road, Lucknow 226001, UP, INDIA

☎ 9235 6200 13 / 14 / 15

✉ sms GLOBAL to 58888

@ info@globalclassroom.in

BANGALORE OFFICE  
Bone Mill, Bagalgunte, Hessarghatta, Main Road, Bangalore 560073

"Amongst the greatest of all great services  
that can possibly be rendered by man  
to Almighty God is the education  
and training of children."

— Baha'u'llah



A Transformative Education: The difference between a better education and the best.